



Corporate Details

Zenith Minerals Limited (ASX:ZNC)

ABN: 96 119 397 938

Issued Shares	294.4M
Unlisted options	9.6M
Mkt. Cap. (\$0.14)	\$41M
Cash (30 Sep 20)	\$5.0M
Debt	Nil

Directors

Peter Bird	Exec Chair
Michael Clifford	Director-CEO
Stan Macdonald	Non-Exec Director
Julian Goldsworthy	Non-Exec Director
Graham Riley	Non-Exec Director
Nicholas Ong	CFO & Co Sec

Major Shareholders

Directors	~8%
HSBC Custody. Nom.	9.5%
J P Morgan	5.3%
Granich	4.5%
Miquilini	3.4%
Abingdon	3.5%

Contact Us

Level 2, 33 Ord Street
WEST PERTH WA 6005
PO Box 1426
WEST PERTH WA 6872
Telephone: (08) 9226 1110
Email: info@zenithminerals.com.au
Web: www.zenithminerals.com.au



RC DRILLING AFFIRMS LARGE SCALE GOLD ZONE - SPLIT ROCKS GOLD PROJECT

- 2 Phase one of the reverse circulation (RC) drill campaign at the Dulcie Laterite Pit target has affirmed recent positive aircore results with broad gold mineralisation intersected down dip in the shear zone.
- 2 Initial 4m composite assay results from the first 18 RC holes now received (a total of 27 RC holes completed on 120m spaced sections). Drilling testing the upper portion of the drill target returned gold mineralisation in every hole. Notable results include:
 - 8m @ 7.1 g/t Au incl 4m @ 14.4 g/t Au
 - 12m @ 3.1 g/t Au incl 8m @ 4.4 g/t Au
 - 8m @ 1.1 g/t Au
 - 4m @ 1.8 g/t Au
 - 8m @ 0.6 g/t Au within 20m @ 0.4 g/t Au
 - 15m @ 0.5 g/t Au (eoh) within 39m @ 0.4g/t Au
 - 16m @ 0.6 g/t Au
 - 8m @ 0.8 g/t Au and 4m @ 1.2 g/t Au
- 2 The large-scale gold bearing bedrock shear zone extends over 2km in strike and remains open down dip (at 30°) with a thickness ranging from 4 to 40m (refer to Figures 3 - 5). The depth extent is yet to be fully defined.
- 2 Gold zones appear to also be locally stacked and open to the east, as well as down-dip to the west, requiring a second phase of RC drilling – this will commence in early 2021.
- 2 These RC results compliment those previously reported from aircore drilling on the 12-Dec-20 including:
 - 14m @ 3.5 g/t Au
 - 4m @ 2.9 g/t Au
 - 4m @ 1.5 g/t Au
 - 1m @ 3.7 g/t Au & 1m @ 1.1g/t Au
 - 5m @ 1.6 g/t Au
 - 20m @ 0.7 g/t Au (eoh)
 - 12m @ 1.2 g/t Au
- 2 Assay results for 1m samples from the mineralised intervals reported in this ASX release along with initial results from the remaining 9 drill holes are anticipated to be received in mid- January 2021.
- 2 The Dulcie Laterite Pit is one of 3 high priority targets to being evaluated first at Split Rocks, the other two are Dulcie North with intersections of 32m @ 9.4 g/t Au, incl 9m @ 31.4 g/t Au and Dulcie Far North with an intersection of 5m @ 5.6 g/t Au. Permitting for follow-up drilling of these two areas is in progress.

- 2 A further 8 of the originally 18 defined gold targets have yet to have first pass drill testing. This work will proceed in early 2021.

Commenting on the results announced Chairman Peter Bird said “This first phase RC test totalling 3026m was undertaken to validate and refine the results we received from the earlier first pass air core drilling program at the Dulcie Laterite Pit target. The aircore defined a very significant anomalous gold bearing shear zone. With this validation now complete and delivering a positive outcome we will now push forward with the second phase of RC drilling in the form of both infill and depth extension programs taking the total RC drilling at this stage to approximately 60 drill holes. The target area is large both with respect to lateral surface extension and depth. Our next phase will attempt to “join the dots” in relation to gold mineralisation currently defined. The greater Split Rocks Property is rapidly evolving into a significant value initiative for a Company which has an extensive portfolio of high order gold and base metal assets. As stated in this announcement we are running parallel pathways at Split Rocks on a suite of other targets. There remains to be a significant body of work to complete as we move forward into next year. We are very excited about the opportunity that this presents “

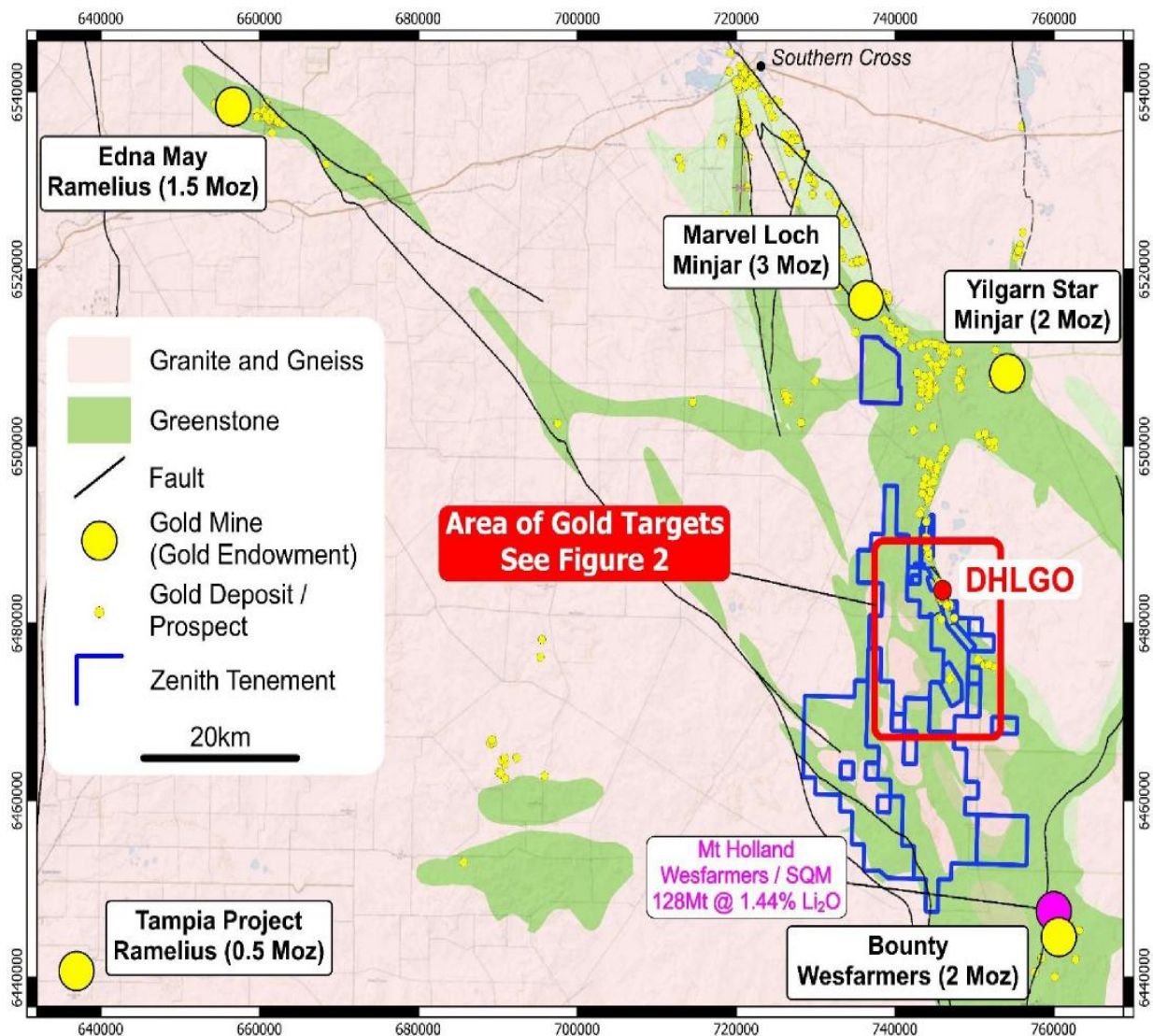


Figure 1- Split Rocks Project Location Map Showing Zenith tenements, Dulcie Heap Leach Gold Operation (DHLGO) Prospect and Regional Gold Endowment

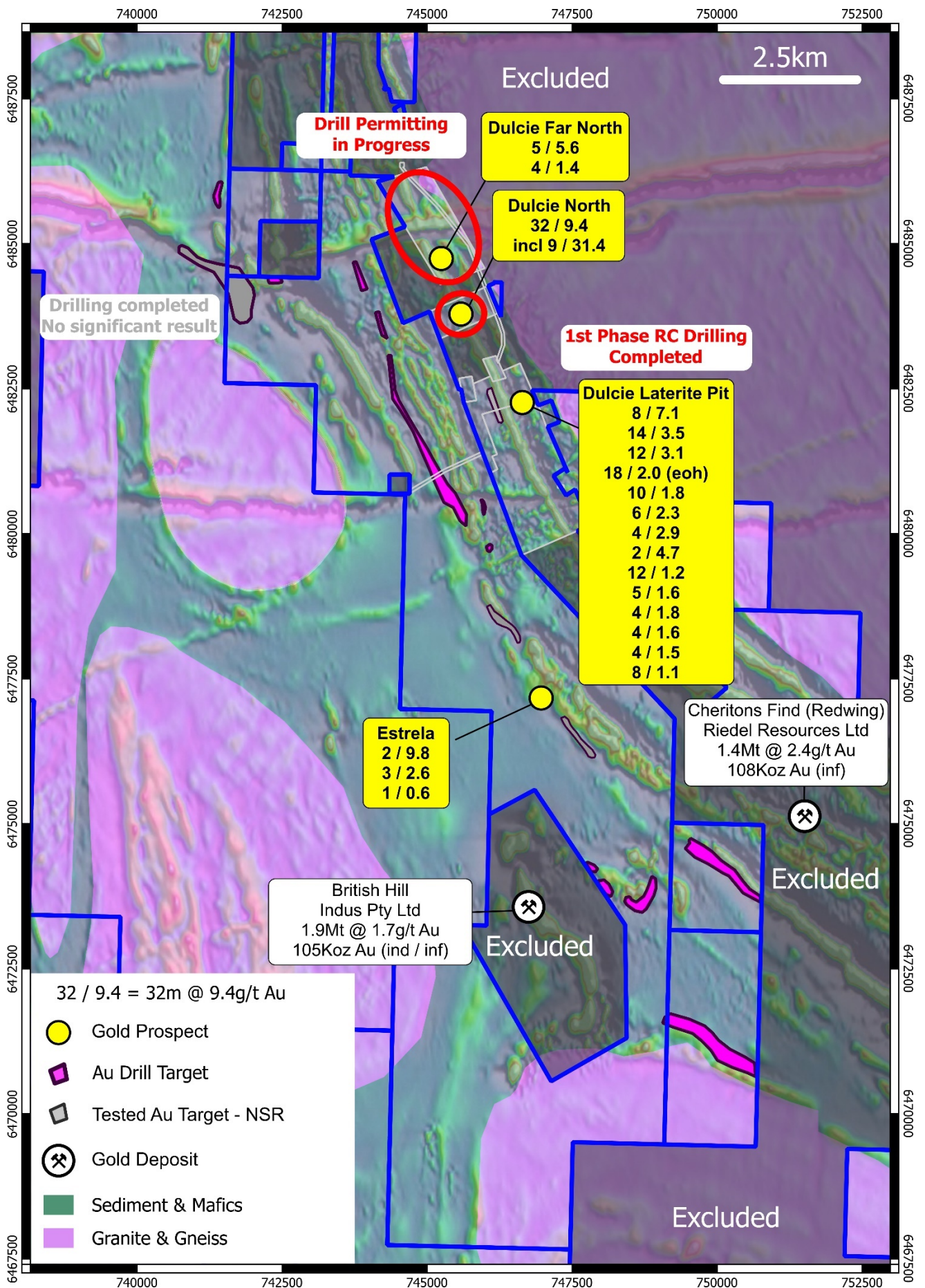


Figure 2: Split Rocks Project Gold Targets and Significant Aircore Drill Results (yellow captions) showing gold drill targets, and areas of Planned Drilling

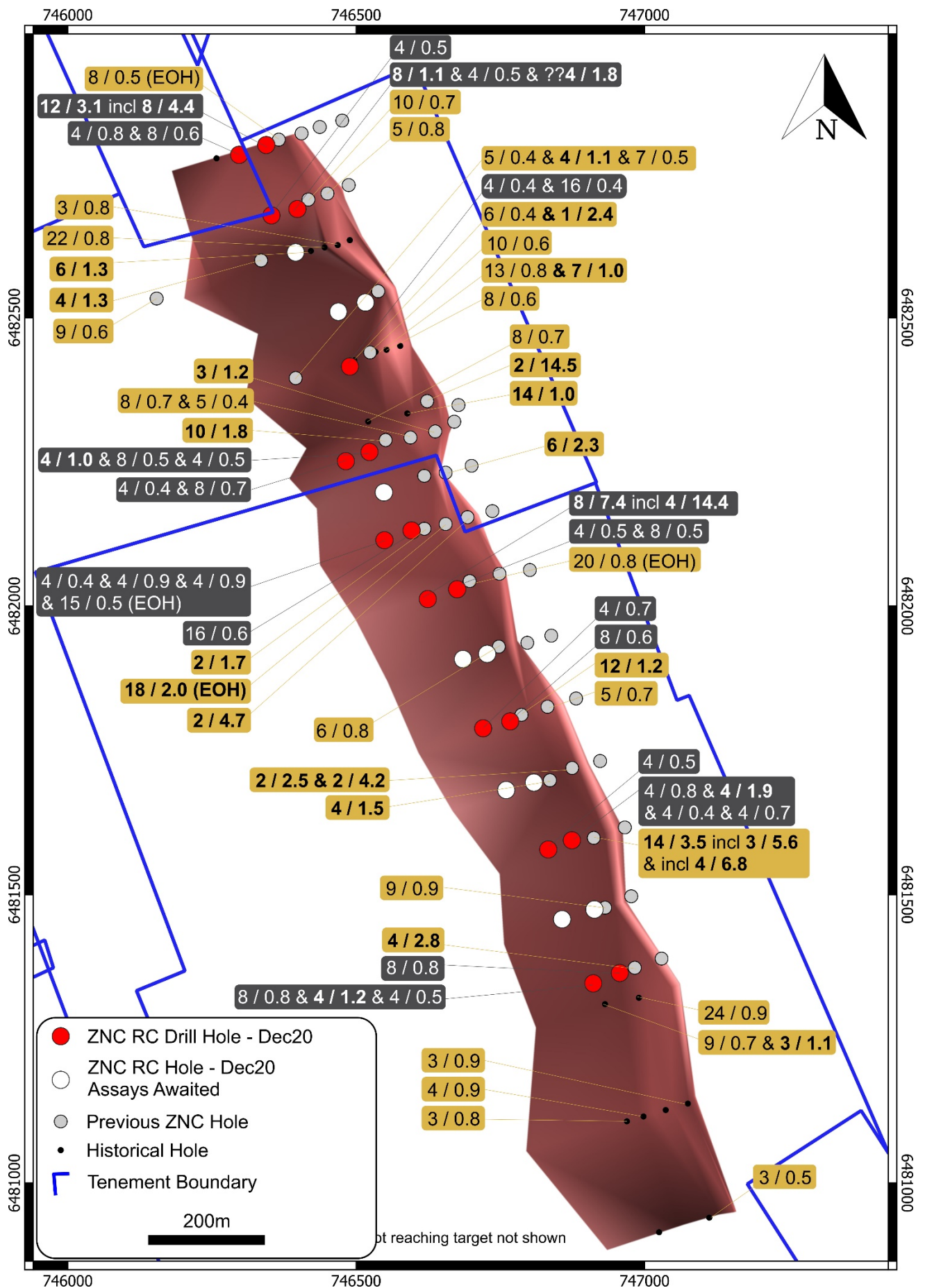


Figure 3: Split Rocks Project – Dulcie Laterite Pit Plan with Significant Drill Results and Bedrock Gold Drill Target (0.2 g/t Au minimum cut-off, maximum 8m internal dilution).

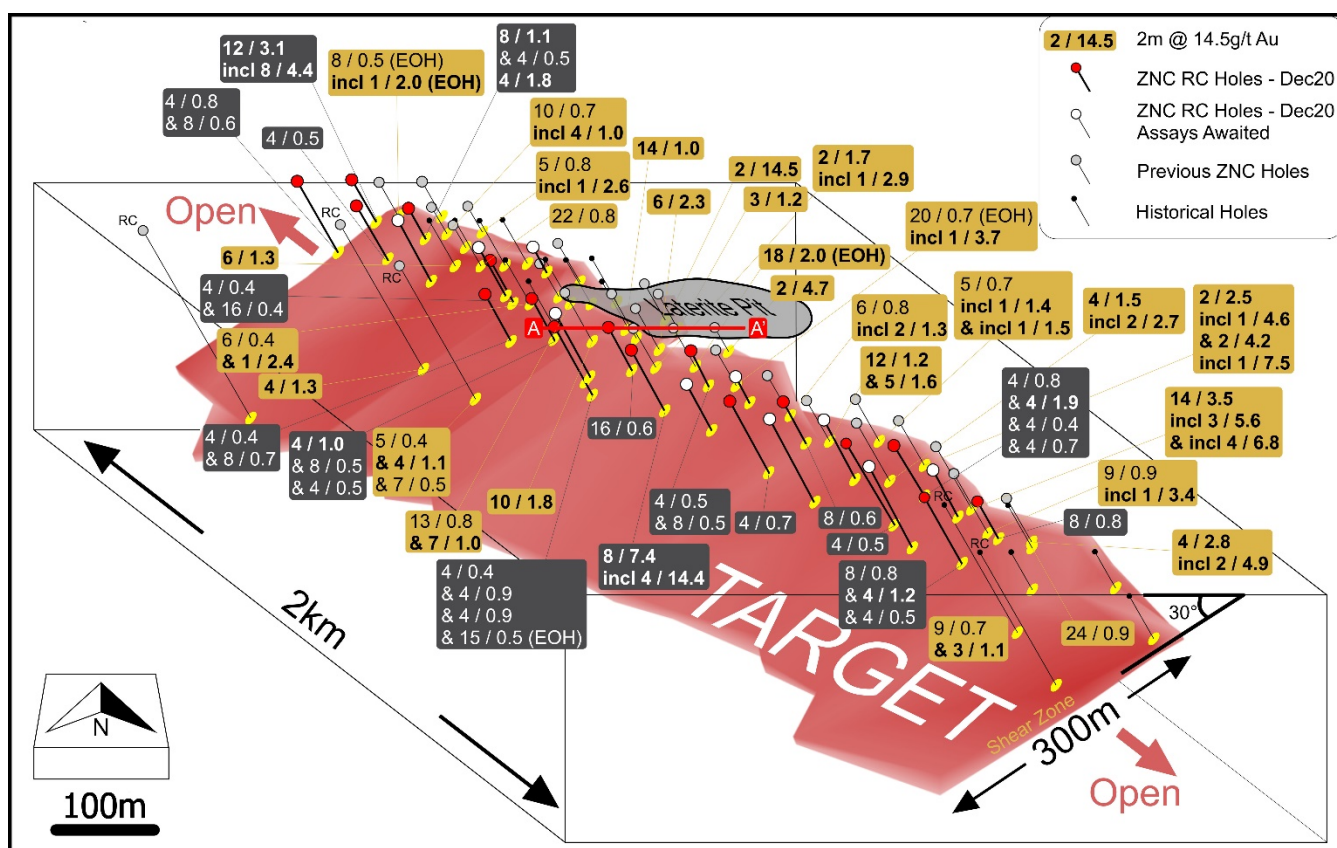


Figure 4: Split Rocks Project – 3D View of Dulcie Laterite Pit Significant Drill Results and Bedrock Gold Drill Target (0.2 g/t Au minimum cut-off, maximum 8m internal dilution).

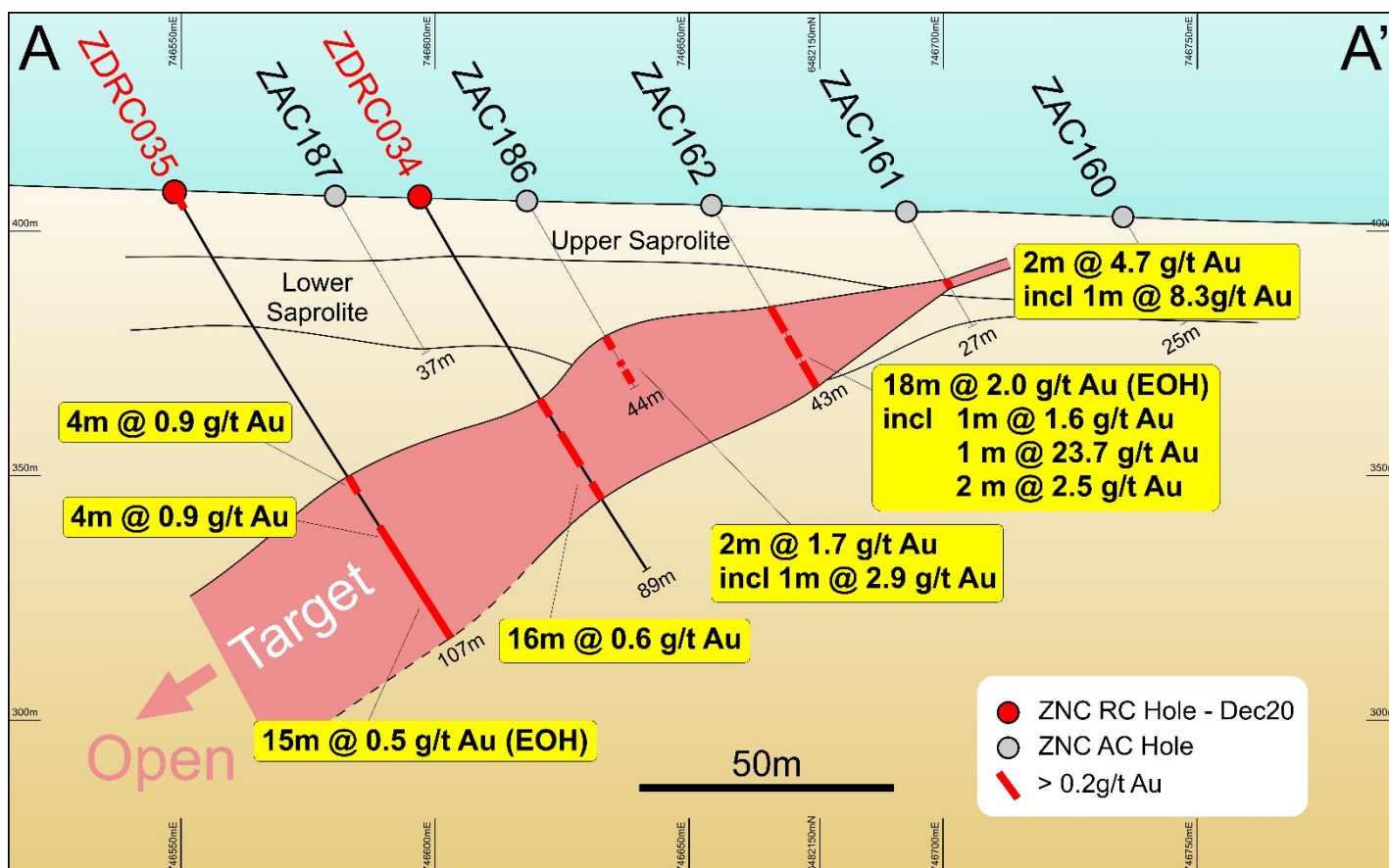


Figure 5: Split Rocks Project – Dulcie Laterite Pit Cross Section A-A' Significant Drill Results and Bedrock Gold Drill Target (Refer to Figure 3 for Section Location)

Split Rocks Project Background on Gold Potential

Zenith's Split Rocks project is located within the Southern Cross region in the Forrestania greenstone belt, approximately halfway between Perth and Kalgoorlie. Several very large current and previously operated gold mines located north and south along strike from Zenith's project area attest to the regional gold endowment of this area.

A major targeting exercise by the Company's geological team original identified 12 high-quality gold drill targets, subsequently expanded to 18 targets in the north eastern sector of the Company's 100% owned Split Rocks project (Refer to ZNC ASX Release 2 September 2020).

Drilling to date has tested 10 targets with outstanding first pass results returned at:

- Dulcie North: 32m @ 9.4 g/t Au, incl 9m @ 31.4 g/t Au with the highest individual 1m sample returning 199.2 g/t Au.
- Dulcie Laterite Pit:
 - 2m @ 14.5 g/t Au, incl. 1m @ 20.8 g/t Au,
 - 18m @ 2.0 g/t Au (EOH) incl. 1m @ 23.7 g/t Au
 - 14m @ 3.5 g/t Au &
 - 2m @ 4.7 g/t Au incl. 1m @ 8.3 g/t Au
- Estrela Prospect: 2m @ 9.8 g/t Au (open to north & south)
- Dulcie Far North: 5m @ 5.6 g/t Au incl. 4m @ 6.8 g/t Au

Phase 2 follow-up drilling at Estrela provided sufficient encouragement to continue to test the identified structural target further along strike to the north with new results including 2m @ 0.4 g/t Au and 1m @ 0.6 g/t Au along strike from 2m @ 9.8 g/t Au and 3m @ 2.6 g/t Au. The mineralised structure at Estrela appears to be present over at least 200 metres of strike but is disrupted by numerous unmineralized pegmatites.

A further 8 of the 18 targets generated by Zenith extending over 18km of strike are yet to have first pass drill testing. Given recent positive ASX announcements, first pass testing of these additional targets will now be deferred whilst the Company concentrates its efforts on following up the significant near surface gold results at the 3 Dulcie targets, Dulcie Laterite Pit, Dulcie North & Dulcie Far North.

RC drilling at the Dulcie Laterite Pit is the subject of this ASX release, whilst permitting is now anticipated to be completed in December for a major follow-up drill campaign at Dulcie North and Dulcie Far North prospects.

Table 1: Significant Gold Intersections from Initial 4m Composite Sampling of Split Rocks RC 18 holes (ZDRC026 to ZDRC043) – Results awaited for 9 holes (ZDRC044 to ZDRC052)

Hole	Initial 4m Composite Samples			
	From (m)	To (m)	Interval (m)	Original Au Grade (g/t)
ZDRC026	36	44	8	0.8
ZDRC027	40	48	8	0.8
&	72	76	4	1.2
&	96	100	4	0.5
ZDRC028	8	12	4	0.8
&	40	44	4	1.9
&	52	56	4	0.4
&	68	72	4	0.7
ZDRC029	44	48	4	0.5
ZDRC030	44	52	8	0.6
ZDRC031	68	72	4	0.7

Hole	Initial 4m Composite Samples			
	From (m)	To (m)	Interval (m)	Original Au Grade (g/t)
ZDRC032	20	24	4	0.5
&	40	48	8	0.5
ZDRC033	52	60	8	7.4
incl	52	56	4	14.4
&	68	72	4	0.4
ZDRC034	56	72	16	0.6
ZDRC035	0	4	4	0.4
&	68	72	4	0.9
&	80	84	4	0.9
&	92	107 (EOH)	15	0.5
ZDRC036	0	4	4	1.0
&	44	52	8	0.5
&	64	80	20	0.4
ZDRC037	0	4	4	0.4
&	60	68	8	0.7
ZDRC038	36	40	4	0.4
&	56	72	16	0.4
ZDRC039	44	56	12	3.1
incl	44	52	8	4.4
ZDRC040	24	28	4	0.8
&	72	80	8	0.6
ZDRC041	32	40	8	1.1
&	56	60	4	0.5
&	84	88	4	1.8
ZDRC042	16	20	4	0.5
ZDRC043	60	64	4	0.4
	64	119	Assay results awaited	
ZDRC044	Assay results awaited			
ZDRC045				
ZDRC046				
ZDRC047				
ZDRC048				
ZDRC049				
ZDRC050				
ZDRC051				
ZDRC052				

Note: Zenith has gold rights below 6m from surface only. Some 4m composite results extend through the zone 4m – 8m depth interval. High-grade intersections are length weighted average grades with minimum cut -off grade of 1.0g/t Au and no internal dilution, whilst lower grade intersections are length weighted average grades with minimum cut-off grade of 0.4g/t Au and maximum internal dilution of 4m. 4m composites are based on riffle split samples, 1m resamples are all cone split.

Table 2: Drill Hole Collar Locations

Hole_ID	Hole_Type	Easting	Northing	RL	Depth (m)	Azimuth	Dip
ZDRC026	RC	746957	6481364	410	71	73	-60
ZDRC027	RC	746911	6481346	411	119	73	-60
ZDRC028	RC	746874	6481594	406	107	73	-60
ZDRC029	RC	746833	6481578	405	113	73	-60
ZDRC030	RC	746767	6481800	401	83	73	-60
ZDRC031	RC	746720	6481788	403	95	73	-60
ZDRC032	RC	746675	6482029	411	89	73	-60
ZDRC033	RC	746624	6482012	402	89	73	-60
ZDRC034	RC	746596	6482131	407	89	73	-60
ZDRC035	RC	746549	6482114	402	107	73	-60
ZDRC036	RC	746523	6482267	404	101	73	-60
ZDRC037	RC	746482	6482251	410	107	73	-60
ZDRC038	RC	746489	6482415	398	140	73	-60
ZDRC039	RC	746344	6482799	407	155	73	-60
ZDRC040	RC	746297	6482782	417	107	73	-60
ZDRC041	RC	746398	6482688	400	101	73	-60
ZDRC042	RC	746353	6482677	412	79	73	-60
ZDRC043	RC	746395	6482613	403	119	73	-60
ZDRC044	RC	746516	6482526	489	107	73	-60
ZDRC045	RC	746469	6482510	402	131	73	-60
ZDRC046	RC	746548	6482197	403	155	73	-60
ZDRC047	RC	746727	6481917	404	149	73	-60
ZDRC048	RC	746685	6481908	396	101	73	-60
ZDRC049	RC	746808	6481694	411	113	73	-60
ZDRC050	RC	746760	6481681	412	119	73	-60
ZDRC051	RC	746913	6481474	409	143	73	-60
ZDRC052	RC	746857	6481457	411	137	73	-60

For further information please refer to the Company's website or contact the Company directly.

Authorised for release by the Zenith Minerals Limited Board of Directors – 17th December 2020

For further information contact:

Zenith Minerals Limited

Directors Michael Clifford or Peter Bird

E: mick@zenithminerals.com.au / peter@zenithminerals.com.au Phone +61 8 9226 1110

Media Enquiries

Fraser Beattie

E: fbeattie@canningspurple.com.au Phone +61 8 6314 6300

Competent Persons Statement

The information in this report that relates to Exploration Results is based on information compiled by Mr Michael Clifford, who is a Member of the Australian Institute of Geoscientists and an employee of Zenith Minerals Limited. Mr Clifford has sufficient experience which is relevant to the style of mineralisation and type of deposit under consideration and to the activity which he is undertaking to qualify as a Competent Person as defined in the 2012 Edition of the 'Australasian Code for Reporting of Exploration Results, Mineral Resources and Ore Reserves'. Mr Clifford consents to the inclusion in the report of the matters based on his information in the form and context in which it appears.

Material ASX Releases Previously Released

The Company has released all material information that relates to Exploration Results, Mineral Resources and Reserves, Economic Studies and Production for the Company's Projects on a continuous basis to the ASX and in compliance with JORC 2012. The Company confirms that it is not aware of any new information that materially affects the content of this ASX release and that the material assumptions and technical parameters remain unchanged.

About Zenith

Zenith has a vision to build a gold and base metals business with a team of proven project finders. Focus is on 100% owned Zenith projects, whilst partners progress multiple additional opportunities using third party funds.

Zenith is continuing to focus on its core Australian gold and copper projects including:

- **Red Mountain Gold Project** in Queensland (100% owned) where ongoing drilling is following-up the high-grade near surface gold and silver intersected in the maiden drill program (ASX Releases 3 Aug 20 & 13 Oct 20), including:
 - 13m @ 8.0 g/t Au & 3.2 g/t Ag from surface, incl. 6m @ 16.7 g/t Au & 5.3g/t Ag
 - 15m @ 3.5 g/t Au, incl. 2m @ 22.4 g/t Au
- **Split Rocks Gold Project** in Western Australia (100% owned), where recent drilling returned, high-grade near surface gold mineralisation at multiple targets (ASX Release 5 Aug 20, 19-Oct-20, 28-Oct-20), including:
 - Dulcie North: 32m @ 9.4 g/t Au, incl 9m @ 31.4 g/t Au with the highest individual 1m sample returning 199.2 g/t Au.
 - Dulcie Laterite Pit:
 - 2m @ 14.5 g/t Au, incl. 1m @ 20.8 g/t Au,
 - 18m @ 2.0 g/t Au (EOH) incl. 1m @ 23.7 g/t Au &
 - 14m @ 3.5 g/t Au
 - Estrela Prospect: 2m @ 9.8 g/t Au (open to north & south)
 - Dulcie Far North: 5m @ 5.6 g/t Au incl. 4m @ 6.8 g/t Au
- **Develin Creek Copper-Zinc Project** in Queensland (100% owned) – maiden drill test of the new Snook copper target located 30km south of Zenith's JORC resources discovers massive sulphides.
- **Jackadgery Gold Project** in New South Wales (option to earn initial 90%), historic trenching returned 160m @ 1.2 g/t Au. No drilling to date. Zenith planning maiden drill test (ASX Release 10 Sep 20).

Section 1 Sampling Techniques and Data

(Criteria in this section apply to all succeeding sections.)

Criteria	JORC Code explanation	Commentary
Sampling techniques	<i>Nature and quality of sampling (e.g. cut channels, random chips, or specific specialised industry standard measurement tools appropriate to the minerals under investigation, such as down hole gamma sondes, or handheld XRF instruments, etc.). These examples should not be taken as limiting the broad meaning of sampling.</i>	Assays received for 18 reverse circulation drill holes.
	<i>Include reference to measures taken to ensure sample representivity and the appropriate calibration of any measurement tools or systems used.</i>	1m drill samples collected via a cyclone were split through riffle splitter. Routine sampling on 4m composites via riffle splitting the 1m cone split samples. Selected 1m intervals will now be re-assayed as 1m samples.
	<i>Aspects of the determination of mineralisation that are Material to the Public Report. In cases where 'industry standard' work has been done this would be relatively simple (e.g. 'reverse circulation drilling was used to obtain 1 m samples from which 3 kg was pulverised to produce a 30 g charge for fire assay'). In other cases more explanation may be required, such as where there is coarse gold that has inherent sampling problems. Unusual commodities or mineralisation types (e.g. submarine nodules) may warrant disclosure of detailed information.</i>	Reverse circulation drilling was used to obtain 1 m to 4m samples from which 2 to 3 kg was pulverised to produce a 30 g charge for fire assay & ICP-AES analysis of base metal & trace elements
Drilling techniques	<i>Drill type (e.g. core, reverse circulation, open-hole hammer, rotary air blast, auger, Bangka, sonic, etc.) and details (e.g. core diameter, triple or standard tube, depth of diamond tails, face-sampling bit or other type, whether core is oriented and if so, by what method, etc.).</i>	Reverse circulation
Drill sample recovery	<i>Method of recording and assessing core and chip sample recoveries and results assessed.</i>	Drill chips were sieved and logged by a qualified geologist on site, data recorded in field on paper logs and transferred to digital database
	<i>Measures taken to maximise sample recovery and ensure representative nature of the samples.</i>	Drilling produced generally dry samples with excellent recoveries, all 1m samples were cone split on site with a subsequent 4m composite sample generated using a riffle splitter to ensure a representative sample was collected for assay.
	<i>Whether a relationship exists between sample recovery and grade and whether sample bias may have occurred due to preferential loss/gain of fine/coarse material.</i>	No indications of sample bias based on results to date

Logging	<i>Whether core and chip samples have been geologically and geotechnically logged to a level of detail to support appropriate Mineral Resource estimation, mining studies and metallurgical studies.</i>	Drill chips were sieved and logged by a qualified geologist on site. No reporting of resources.
	<i>Whether logging is qualitative or quantitative in nature. Core (or costean, channel, etc.) photography.</i>	Drill chips logging is qualitative. Representative chip samples collected and stored in 20 compartment plastic chip trays and photographed.
	<i>The total length and percentage of the relevant intersections logged.</i>	All intervals logged and sampled
Sub-sampling techniques and sample preparation	<i>If core, whether cut or sawn and whether quarter, half or all core taken.</i>	No core
	<i>If non-core, whether riffled, tube sampled, rotary split, etc. and whether sampled wet or dry.</i>	Samples riffle split
	<i>For all sample types, the nature, quality and appropriateness of the sample preparation technique.</i>	Samples were analysed at Nagrom Laboratories in Perth, the samples were crushed, pulverised and assayed by gold using fire assay and base and trace metals by ICP-AES.
	<i>Quality control procedures adopted for all sub-sampling stages to maximise representivity of samples.</i>	~2 to 3kg of drill sample was crushed and pulverised and a sub-sample was taken in the laboratory and analysed.
Sub-sampling techniques and sample preparation - continued	<i>Measures taken to ensure that the sampling is representative of the in-situ material collected, including for instance results for field duplicate/second-half sampling.</i>	Field duplicates were collected during drilling and sampling
	<i>Whether sample sizes are appropriate to the grain size of the material being sampled.</i>	Each sample was 2kg to 3kg in weight which is appropriate to test for the grain size of material.
Quality of assay data and laboratory tests	<i>The nature, quality and appropriateness of the assaying and laboratory procedures used and whether the technique is considered partial or total.</i>	The samples were crushed and assayed for gold using fire assay which is considered a near total assay technique
	<i>For geophysical tools, spectrometers, handheld XRF instruments, etc., the parameters used in determining the analysis including instrument make and model, reading times, calibrations factors applied and their derivation, etc.</i>	No geophysical tools used in this drilling program
	<i>Nature of quality control procedures adopted (e.g. standards, blanks, duplicates, external laboratory checks) and whether acceptable levels of accuracy (i.e. lack of bias) and precision have been established.</i>	Certified reference material, blanks and duplicates samples were included in each sample batch and appropriate levels of precision and accuracy were confirmed in QA/QC review.
Verification of sampling and assaying	<i>The verification of significant intersections by either independent or alternative company personnel.</i>	Company personnel have observed the assayed samples
	<i>The use of twinned holes.</i>	No twinning

	<i>Documentation of primary data, data entry procedures, data verification, data storage (physical and electronic) protocols.</i>	Field data were all recorded in field laptops and sample record books and then entered into a database.
	<i>Discuss any adjustment to assay data.</i>	No adjustments were made.
<i>Location of data points</i>	<i>Accuracy and quality of surveys used to locate drill holes (collar and down-hole surveys), trenches, mine workings and other locations used in Mineral Resource estimation.</i>	Sample location is based on GPS coordinates +/-5m accuracy
	<i>Specification of the grid system used.</i>	The grid system used to compile data was MGA94 Zone 50
<i>Location of data points - continued</i>	<i>Quality and adequacy of topographic control.</i>	Topography control is +/- 5m.
<i>Data spacing and distribution</i>	<i>Data spacing for reporting of Exploration Results.</i>	Drill holes shown in Figures 2 to 4 and Tables 1 & 2.
	<i>Whether the data spacing and distribution is sufficient to establish the degree of geological and grade continuity appropriate for the Mineral Resource and Ore Reserve estimation procedure(s) and classifications applied.</i>	The data alone will not be used to estimate mineral resource or ore reserve
	<i>Whether sample compositing has been applied.</i>	Drilling produced generally dry samples with excellent recoveries, all 1m samples were cone split on site with a subsequent 4m composite sample generated using a riffle splitter to ensure a representative sample was collected for assay.
<i>Orientation of data in relation to geological structure</i>	<i>Whether the orientation of sampling achieves unbiased sampling of possible structures and the extent to which this is known, considering the deposit type.</i>	The intersections in all drill holes are interpreted to be close to true widths. .
	<i>If the relationship between the drilling orientation and the orientation of key mineralised structures is considered to have introduced a sampling bias, this should be assessed and reported if material.</i>	As above
<i>Sample security</i>	<i>The measures taken to ensure sample security.</i>	Samples were kept in numbered and secured bags until delivered to the laboratory
<i>Audits or reviews</i>	<i>The results of any audits or reviews of sampling techniques and data.</i>	Sampling techniques are consistent with industry standards

Section 2 Reporting of Exploration Results

(Criteria listed in the preceding section also apply to this section.)

Criteria	JORC Code explanation	Commentary
Mineral tenement and land tenure status	<i>Type, reference name/number, location and ownership including agreements or material issues with third parties such as joint ventures, partnerships, overriding royalties, native title interests, historical sites, wilderness or national park and environmental settings.</i>	Zenith announced on the 21 st March 2019 that it has a 2-year option to explore for bedrock gold (any gold 6 metres below surface) and lithium mineralisation on tenements covering the operating Dulcie Heap Leach Gold Project (DHLGO) in exchange for surface laterite gold rights on Zenith's adjoining exploration licence E77/2388. Zenith may at its sole election exercise the option through the payment of a 2% NSR royalty payable on any future bedrock gold production from the DHLGO project area. The project is located predominantly in vacant crown land.
	<i>The security of the tenure held at the time of reporting along with any known impediments to obtaining a licence to operate in the area.</i>	Tenements are mining leases and prospecting leases, current heap leach operation is active, no known impediments to obtain a licence to operate.
Exploration done by other parties	<i>Acknowledgment and appraisal of exploration by other parties.</i>	Refer to ASX release 21 st March 2019.
Geology	<i>Deposit type, geological setting and style of mineralisation.</i>	Archean mesothermal lode gold mineralisation hosted within banded iron formation (BIF) and mafic rock types.
Drill hole Information	<i>A summary of all information material to the understanding of the exploration results including a tabulation of the following information for all Material drill holes:</i>	Refer to Figures 1 - 4 and Tables 1 & 2 and descriptions in body of text of this ASX release and to Figures 1,2 & 3 and Table 1 and descriptions in body of text of ZNC ASX Release 21 Oct 2019
	<i>o easting and northing of the drill hole collar</i>	
	<i>o elevation or RL (Reduced Level – elevation above sea level in metres) of the drill hole collar</i>	
	<i>o dip and azimuth of the hole</i>	
	<i>o down hole length and interception depth</i>	
	<i>o hole length.</i>	
	<i>If the exclusion of this information is justified on the basis that the information is not Material and this exclusion does not detract from the understanding of the report, the Competent Person should clearly explain why this is the case.</i>	
Data aggregation methods	<i>In reporting Exploration Results, weighting averaging techniques, maximum and/or minimum grade truncations (e.g. cutting of high grades) and cut-off grades are usually Material and should be stated.</i>	High-grade intersections are length weighted average grades with minimum cut -off grade of 1.0g/t Au and no internal dilution, whilst lower grade intersections are length weighted average grades with minimum cut-off grade of 0.4g/t Au and maximum internal dilution of 4m.
	<i>Where aggregate intercepts incorporate short lengths of high-grade results and longer lengths of low grade results, the procedure used for such aggregation should be stated and some typical examples of such aggregations should be shown in detail.</i>	As above and included in Tables
Data aggregation methods - continued	<i>The assumptions used for any reporting of metal equivalent values should be clearly stated.</i>	No metal equivalents used.

<i>Relationship between mineralisation widths and intercept lengths</i>	<i>These relationships are particularly important in the reporting of Exploration Results.</i>	All Zenith drilling is angled -60 degrees east and based on current interpretation is thought to be representing true width thickness of the flat lying supergene or gentle west dipping gold mineralised zones however further drilling is required to confirm this interpretation.
	<i>If the geometry of the mineralisation with respect to the drill hole angle is known, its nature should be reported.</i>	As above
	<i>If it is not known and only the down hole lengths are reported, there should be a clear statement to this effect (e.g. 'down hole length, true width not known').</i>	Mineralised intervals reported are down-hole lengths but are believed to be close to true thickness
<i>Diagrams</i>	<i>Appropriate maps and sections (with scales) and tabulations of intercepts should be included for any significant discovery being reported. These should include, but not be limited to a plan view of drill hole collar locations and appropriate sectional views.</i>	Refer to Figures 1 - 4 and Table 1 and 2 in body of text of this ASX release and to Figures 1,2 & 3 and Table 1 and descriptions in body of text of ZNC ASX Release 21 Oct 2019 and those in ZNC ASX Release 5 Aug 2020 & 2 Sep 2020.
<i>Balanced reporting</i>	<i>Where comprehensive reporting of all Exploration Results is not practicable, representative reporting of both low and high grades and/or widths should be practiced to avoid misleading reporting of Exploration Results.</i>	Refer to Figures 1 - 4 and Table 1 and 2 in body of text of this ASX release.
<i>Other substantive exploration data</i>	<i>Other exploration data, if meaningful and material, should be reported including (but not limited to): geological observations; geophysical survey results; geochemical survey results; bulk samples – size and method of treatment; metallurgical test results; bulk density, groundwater, geotechnical and rock characteristics; potential deleterious or contaminating substances.</i>	No other meaningful or material exploration data to be reported at this stage.
<i>Further work</i>	<i>The nature and scale of planned further work (e.g. tests for lateral extensions or depth extensions or large-scale step-out drilling).</i>	Follow-up drilling planned.
	<i>Diagrams clearly highlighting the areas of possible extensions, including the main geological interpretations and future drilling areas, provided this information is not commercially sensitive.</i>	Refer to figures in body of this report.